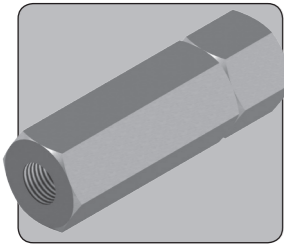


# YV25

## YIELD VALVE

1/4"

UP TO 828 BAR  
12,000 PSI



The YV25 is a 1/4" nominal bore check valve with integral reverse thermal relief function. It will allow flow in one direction, and blocks flow in the opposite direction, unless a preset pressure differential is exceeded.

The valve may be used in applications where pressure trapped on the outlet side of the check valve is subject to thermal expansion that would cause local over-pressurisation of the trapped volume. It is essential that the volume on the inlet side of the valve is able to accept any relieved fluid without inlet side pressure rising significantly, hence the valve is typically only suitable for systems where an accumulator is directly connected to the piping on the inlet side of the valve.

The YV25 is not classed as a safety accessory within the Pressure Equipment Directive (97/23/EC) and may only be used to protect pressure equipment falling within Article 3, Clause 3 of the Directive.

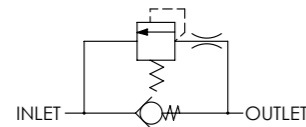
- Check or Non-Return valve with integral reverse thermal relief function
- Suitable for use with mineral oils, water glycols & plain water
- Suitable for many other media, contact us for advice
- Various porting and seal options available

### Specifications

**BASIC MODEL NUMBER**

**YV25**

**SYMBOL**



**MAX WORKING PRESSURE (LIQUID)**

828 bar  
(12,000 psi)

**CHECK VALVE CV (FLOW CAPACITY)**

0.8

**RELIEF ORIFICE SIZE**

Ø0.6mm (Ø0.025")

**FLUID**

Liquids only  
See materials section

**TEMPERATURE RANGE**

See Product Selector opposite  
and Technical Data section

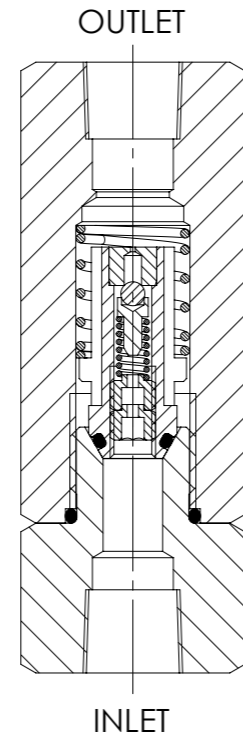
**PORT SIZE**

1/4"

**WEIGHT**

0.3 kg  
(0.7 lb)

Specifications may change without notice



### Materials

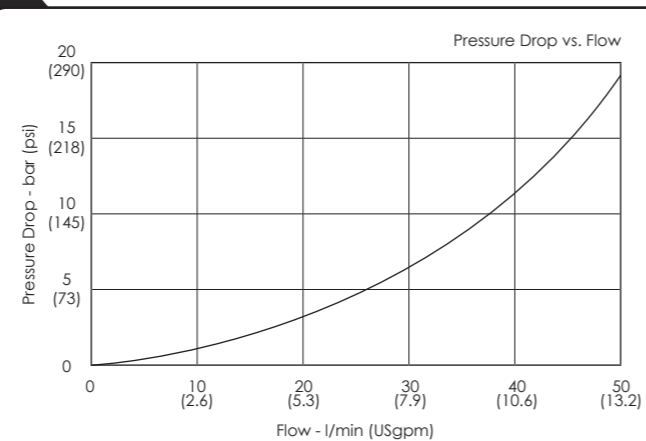
Externally Exposed Parts: 316 stainless steel

Internally Wetted Parts: 316 and other 300 series stainless steels, 17-4 PH stainless steel and silicon nitride.

The standard valve is designed for use with mineral oil, water glycols and plain water, but may be used with a wide variety of media compatible with the materials of construction. For further advice, please contact us.

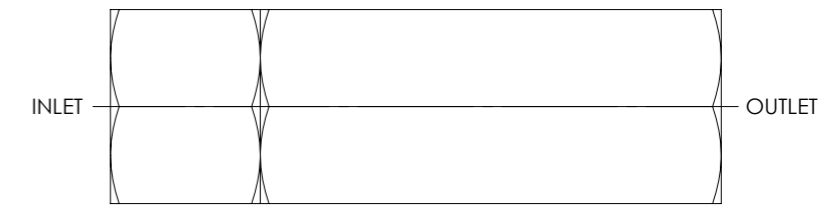
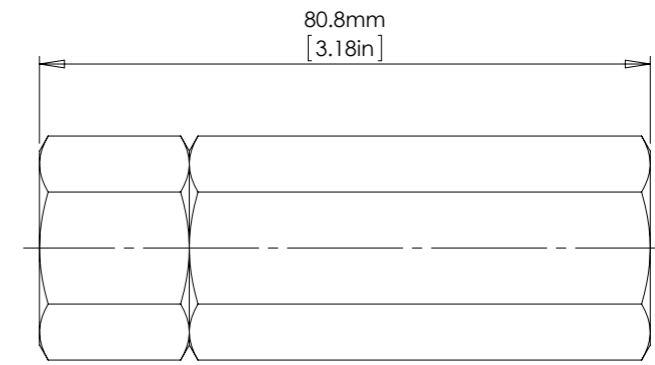
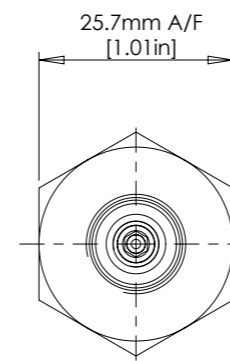
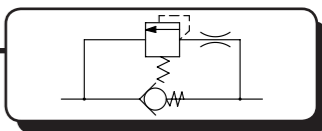
⚠ The standard valve has Viton® seals. Further seal options are available via the Product Selector. Compatibility with the working fluid at the operating temperature must be considered.

### Typical Performance



Typical performance based on water

### Installation Diagram



### Product Selector

YV25 P - NBR - 0.6 / 12K

VALVE TYPE	PORTING OPTIONS	SEAL OPTIONS	RELIEF SETTING RANGE	MAX WORKING PRESSURE
YV25	<p><b>P</b> 1/4" BSPP female</p> <p><b>N</b> 1/4" NPT female</p>	<p>Leave blank for Viton® seals -10°C to +120°C</p> <p><b>NBR</b> Nitrile seals -30°C to +105°C</p> <p><b>EP</b> EPDM seals -45°C to +120°C</p> <p><b>KLZ</b> Kalrez® seals -25°C to +120°C</p> <p><b>HNBR</b> Hydrogenated Nitrile seals -20°C to +120°C</p> <p>Further seal options are available on request</p>	<p><b>0.6</b> 13.8 - 41 bar (200 - 600 psi)</p> <p><b>1.2</b> 34.5 - 83 bar (500 - 1,200 psi)</p> <p><b>2</b> 69 - 138 bar (1,000 - 2,000 psi)</p> <p>Required setting must be advised when ordering</p>	<p><b>12K</b> 828 bar (12,000 psi) Liquid</p>

Repair and seal kits are available on request

For a seal kit add SK at the end of the model code and for a repair kit add RK



Catalogue also available on digital media  
Visit our website for a full online search facility  
[www.bisvalves.co.uk](http://www.bisvalves.co.uk)

SOLENOID  
STOP AND METERING  
3 PORT DIRECTIONAL CONTROL  
4 PORT DIRECTIONAL CONTROL  
CHECK AND SHUTTLE  
PILOT OPERATED CHECK  
RELIEF  
EXCESS FLOW  
FILTERS  
PRESSURE SENSING  
PUMPS  
ACTUATORS  
TECHNICAL DATA