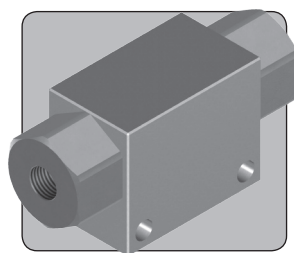


SV50 SHUTTLE VALVE

**1/4" 3/8" 1/2" UP TO 552 BAR
8,000 PSI**



The SV50 is a 1/2" nominal bore shuttle valve. The valve will sense the higher of two pressures and send this pressure to the outlet port.

The valve uses sealed poppet technology to give virtually zero leakage with liquids and gases.

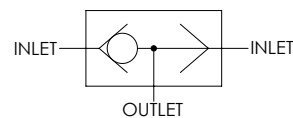
- Shuttle valve
- Stainless steel construction
- Sealed poppet design
- Virtually zero leakage
- Suitable for liquid or gas
- Suitable for use with air, nitrogen, sweet natural gas, mineral oils, water glycols, water and sea water
- Suitable for many other media, contact us for advice
- Higher pressure and subsea variants available
- NACE MR01-75 compliant version available
- Various seal options available
- Various porting options available

Specifications

BASIC MODEL NUMBER

SV50

SYMBOL



MAX WORKING PRESSURE (LIQUID)

552 bar
(8,000 psi)

MAX WORKING PRESSURE (GAS)

276 bar
(4,000psi)

CV (FLOW CAPACITY)

SV50/25 - 1.26
SV50/37 - 2.52
SV50/50 - 3.11

FLUID

Liquids and Gases
See materials section

TEMPERATURE RANGE

See Product Selector opposite
and Technical Data section

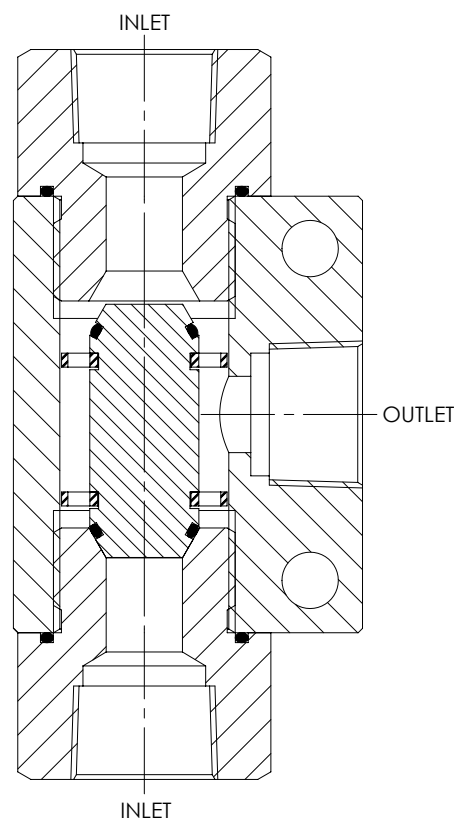
PORT SIZE

1/4", 3/8" or 1/2"

WEIGHT

1.1 kg
(2.4 lb)

Specifications may change without notice



Materials

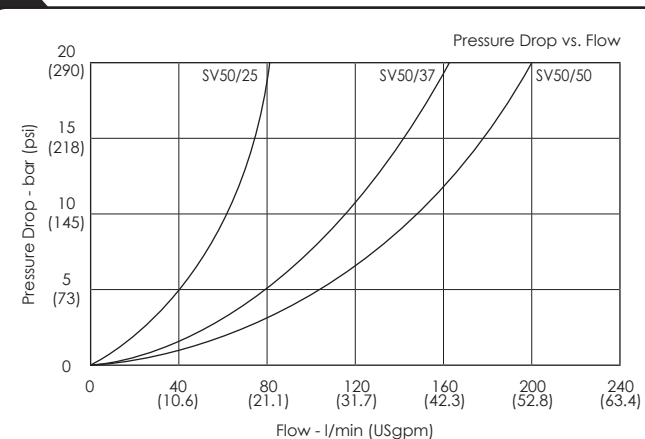
Externally Exposed Parts: 316 stainless steel.

Internally Wetted Parts: 316 stainless steel and acetal.

The standard valve is designed for use with air, nitrogen, sweet natural gas, mineral oil, water glycols, plain water and sea water and may also be used with a wide variety of media compatible with the materials of construction.

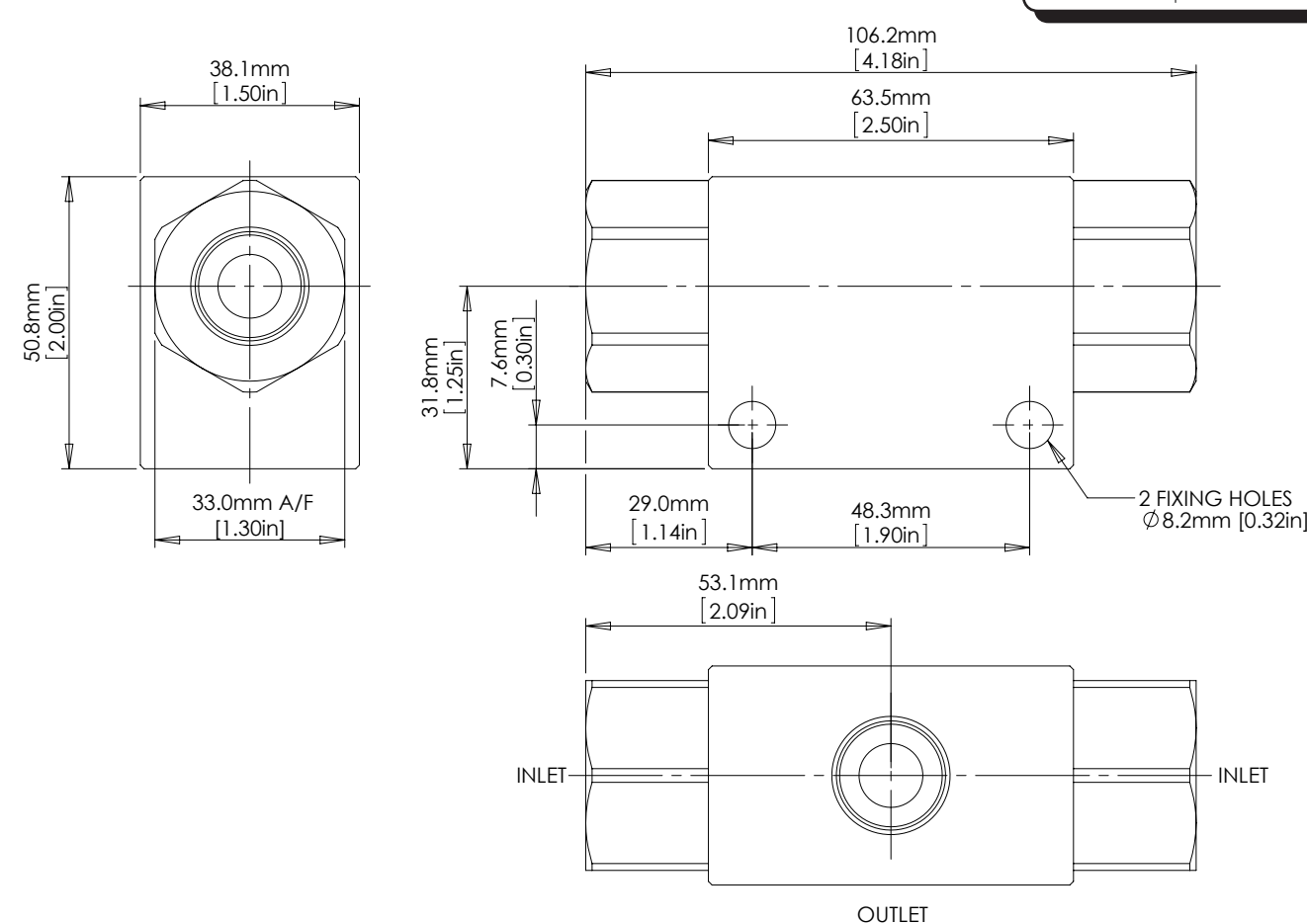
⚠ The standard valve has Viton® seals. Further seal options are available via the Product Selector. Compatibility with the working fluid at the operating temperature must be considered.

Typical Performance



Typical performance based on water

Installation Diagram



Product Selector

SV50 /25P - NBR - 8K

VALVE TYPE	PORTING OPTIONS	SEAL OPTIONS	MAX WORKING PRESSURE
SV50	/25P 1/4" BSPP female	Leave blank for Viton® seals -10°C to +120°C	8K 552 bar (8,000 psi) Liquid 276 bar (4,000 psi) Gas
	/25N 1/4" NPT female	NBR Nitrile seals -30°C to +105°C	
	/37P 3/8" BSPP female	EP EPDM seals -45°C to +120°C	
	/37N 3/8" NPT female	KLZ Kalrez® seals -25°C to +120°C	
	/50P 1/2" BSPP female	HNBR Hydrogenated Nitrile seals -20°C to +120°C	
	/50N 1/2" NPT female	Further seal options are available on request	

Repair and seal kits are available
on request

For a seal kit add SK at the end of the
model code and for a repair kit add RK



Catalogue also available on digital media
Visit our website for a full online search facility
www.bisvalves.co.uk



BS VALVES
The Specifier's Catalogue

SOLENOID
STOP AND METERING
3 PORT DIRECTIONAL CONTROL
4 PORT DIRECTIONAL CONTROL
CHECK AND SHUTTLE
PILOT OPERATED CHECK
RELIEF
EXCESS FLOW
FILTERS
PRESSURE SENSING
PUMPS
ACTUATORS
TECHNICAL DATA