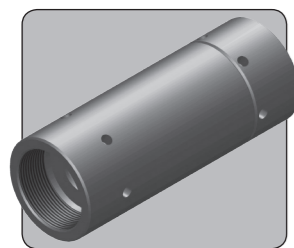


NR200 CHECK VALVE

1 1/4" 1 1/2" 2" UP TO 414 BAR 6,000 PSI



The NR200 is a 2" nominal bore check valve. It will allow flow in one direction, and blocks flow in the opposite direction. It may also be referred to as a non-return valve.

The valve uses sealed poppet technology to give virtually zero leakage with liquids and gases.

- Check or Non-Return valve
- Stainless steel construction
- Sealed poppet design
- Virtually zero leakage
- Can be used subsea
- Suitable for liquid or gas
- Suitable for use with air, nitrogen, mineral oils, water glycols, water and sea water
- Suitable for many other media. For Pressure Equipment Directive compliance, always advise us of system medium
- NACE MR01-75 compliant version available
- High cracking pressure variants available, contact us for details
- Various seal and porting options available

Specifications

BASIC MODEL NUMBER	NR200
SYMBOL	
MAX WORKING PRESSURE (LIQUID)	414 bar (6,000 psi)
MAX WORKING PRESSURE (GAS)	207 bar (3,000 psi)
CV (FLOW CAPACITY)	25.0
FLUID	Liquids and Gases <i>See materials section</i>
TEMPERATURE RANGE	<i>See Product Selector opposite and Technical Data section</i>
PORT SIZE	2"
CRACKING PRESSURE	0.1 - 0.3 bar (2 - 5 psi)
WEIGHT	4.5 kg (9.9 lb)

Specifications may change without notice

Materials

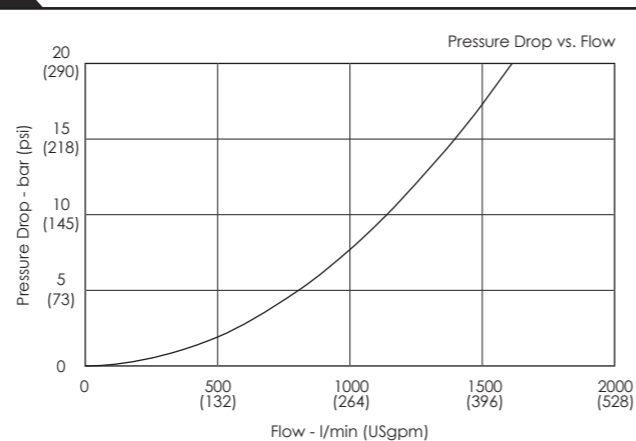
Externally Exposed Parts: 316 stainless steel.

Internally Wetted Parts: 316 stainless steel with 302 stainless steel spring. The spring is inconel for SWD and NACE variants.

The standard valve is designed for use with air, nitrogen, mineral oil, water glycols and plain water, and may also be used with a wide variety of media compatible with the materials of construction.

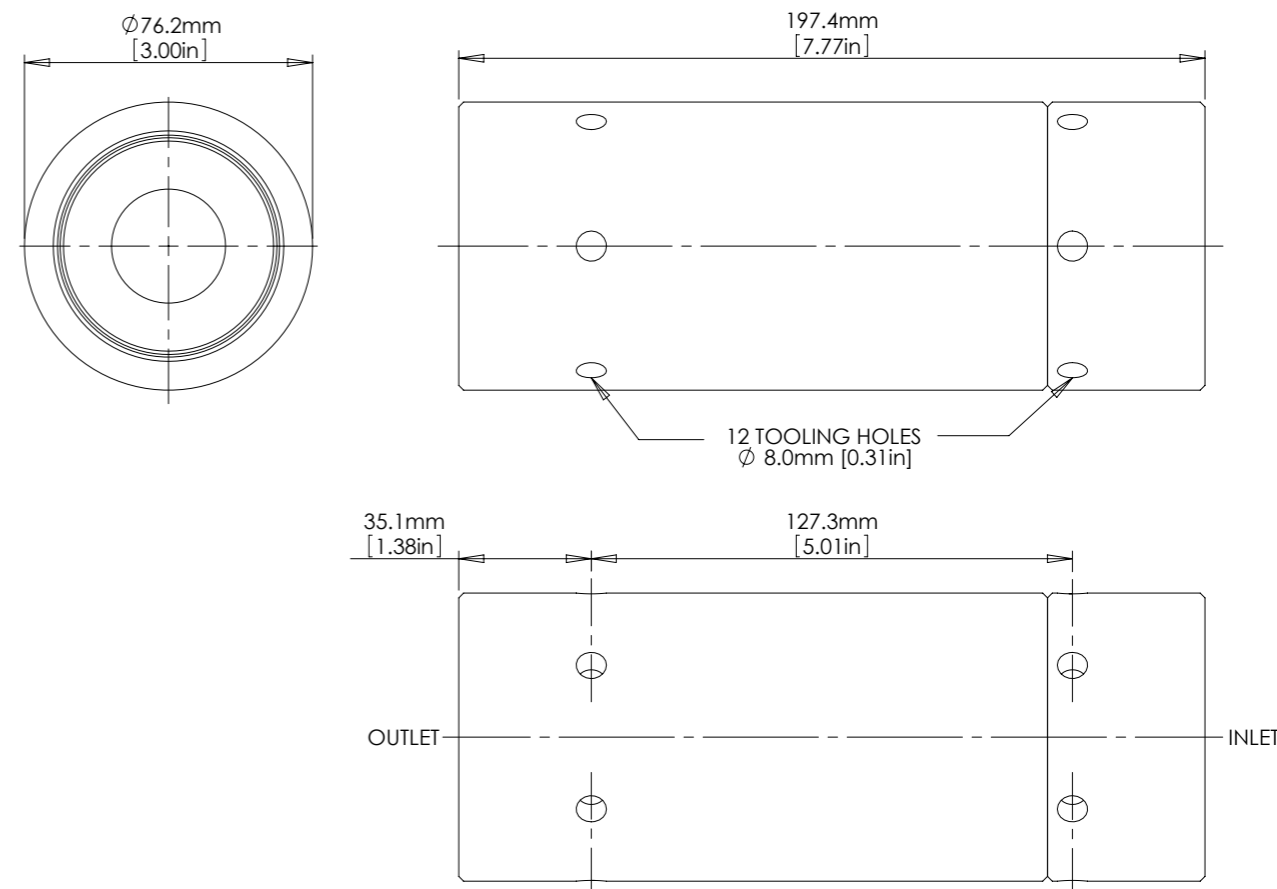
The standard valve has Viton® seals. Further seal options are available via the Product Selector. Compatibility with the working fluid at the operating temperature must be considered.

Typical Performance



Typical performance based on water

Installation Diagram



Product Selector

NR200 P - NBR - SWD - 6K				
VALVE TYPE	PORTING OPTIONS	SEAL OPTIONS	VALVE OPTIONS	MAX WORKING PRESSURE
NR200	P 2" BSPP female	NBR Nitrile seals -30°C to +105°C	SWD Materials compatible with sea water	6K 414 bar (6,000 psi) Liquid 207 bar (3,000 psi) Gas
	N 2" NPT female	EP EPDM seals -45°C to +150°C	NACE Materials comply with NACE MR01-75	
	/125P 1.1/4" BSPP female	KLZ Kalrez® seals -25°C to +200°C		
	/125N 1.1/4" NPT female	HNBR Hydrogenated Nitrile seals -20°C to +150°C		
	/150P 1.1/2" BSPP female			
	/150N 1.1/2" NPT female			

Leave blank for Viton® seals -10°C to +160°C
Leave blank if not required
 Repair and seal kits are available on request
 For a seal kit add SK at the end of the model code and for a repair kit add RK
 Further seal options are available on request



Catalogue also available on digital media
 Visit our website for a full online search facility
www.bisvalves.co.uk

BS VALVES
 The Specifier's Catalogue

SOLENOID
 STOP AND METERING
 3 PORT DIRECTIONAL CONTROL
 4 PORT DIRECTIONAL CONTROL
 CHECK AND SHUTTLE
 PILOT OPERATED CHECK
 RELIEF
 EXCESS FLOW
 FILTERS
 PRESSURE SENSING
 PUMPS
 ACTUATORS
 TECHNICAL DATA