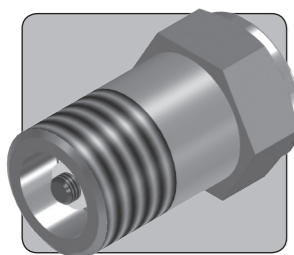


# CV25

## VENTING CHECK VALVE

1/4" UP TO 552 BAR 8,000 PSI




The CV25 is a venting check valve. The valve may be used to vent fluid from a system once a preset cracking pressure is reached.

The valve may be used to vent liquids or gases to atmosphere in topside applications, but is also widely used subsea to ensure that

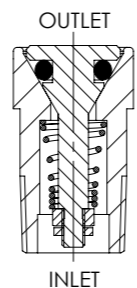
equipment remains at or just above ambient pressure when returning to surface. It should be noted that this valve is not classified as a safety accessory in terms of the Pressure Equipment Directive.

- Check or Non-Return valve
- Stainless steel construction
- Sealed poppet design
- Virtually zero leakage
- Vents fluid to atmosphere at a preset pressure
- Various cracking pressures available
- Can be used subsea
- Suitable for liquid or gas
- Suitable for use with air, nitrogen and plain water
- Various seal options available
- Contact us for other porting options

### Specifications

<b>BASIC MODEL NUMBER</b>	<b>CV25</b>
<b>SYMBOL</b>	INLET  OUTLET
<b>MAX OUTLET PRESSURE</b>	552 bar (8,000 psi)
<b>CV (FLOW CAPACITY)</b>	1.0
<b>FLUID</b>	Liquids and Gases <i>See materials section</i>
<b>TEMPERATURE RANGE</b>	<i>See Product Selector opposite and Technical Data section</i>
<b>PORT SIZE</b>	1/4"
<b>CRACKING PRESSURE</b>	<i>See product selector</i>
<b>WEIGHT</b>	0.03 kg (0.06 lb)

Specifications may change without notice



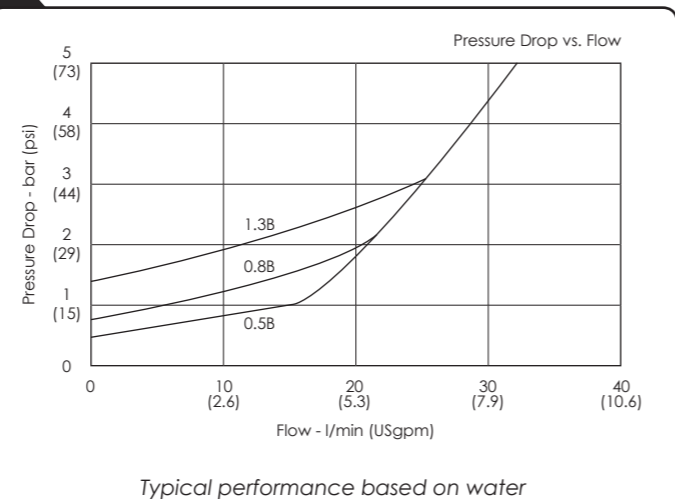
### Materials

Externally Exposed Parts: 316 stainless steel.  
Internally Wetted Parts: 316 and 302 stainless steel.

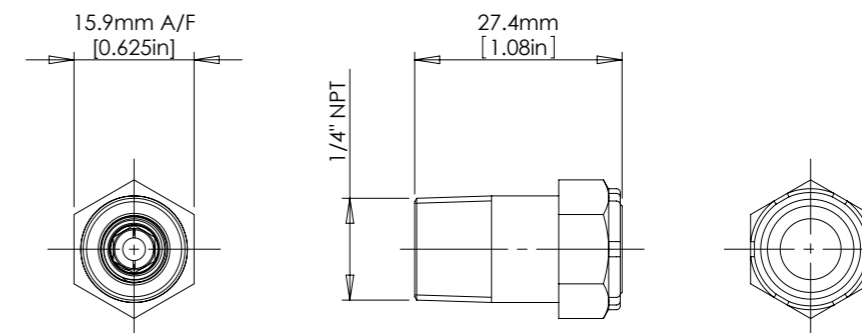
The valve is designed for use with air, nitrogen and plain water, but may be exposed directly to sea water externally. Note that use with water above 100°C is not recommended. Other media compatible with the materials of construction may be used, although consideration must be given to the safety of such fluids when vented to atmosphere.

**!** The standard valve has Viton® seals. Further seal options are available via the Product Selector. Compatibility with the working fluid at the operating temperature must be considered.

### Typical Performance



### Installation Diagram



### Product Selector

CV25 N - NBR - 0.5B			
VALVE TYPE	PORTING OPTIONS	SEAL OPTIONS	CRACKING PRESSURE
CV25	N 1/4" NPT male	<p>Leave blank for Viton® seals -10°C to +120°C</p> <p><b>NBR</b> Nitrile seals -30°C to +105°C</p> <p><b>EP</b> EPDM seals -45°C to +120°C</p> <p><b>KLZ</b> Kalrez® seals -25°C to +120°C</p> <p><b>HNBR</b> Hydrogenated Nitrile seals -20°C to +120°C</p> <p><i>Further seal options are available on request</i></p> <p><b>!</b> The safety of venting high and low temperature fluids to atmosphere must be considered</p>	<p><b>0.5B</b> 0.5 bar (8 psi)</p> <p><b>0.8B</b> 0.8 bar (12 psi)</p> <p><b>1.3B</b> 1.3 bar (19 psi)</p>

Repair and seal kits are available on request  
For a seal kit add SK at the end of the model code and for a repair kit add RK



Catalogue also available on digital media  
Visit our website for a full online search facility  
[www.bisvalves.co.uk](http://www.bisvalves.co.uk)

SOLENOID  
STOP AND METERING  
3 PORT DIRECTIONAL CONTROL  
4 PORT DIRECTIONAL CONTROL  
CHECK AND SHUTTLE  
PILOT OPERATED CHECK  
RELIEF  
EXCESS FLOW  
FILTERS  
PRESSURE SENSING  
PUMPS  
ACTUATORS  
TECHNICAL DATA